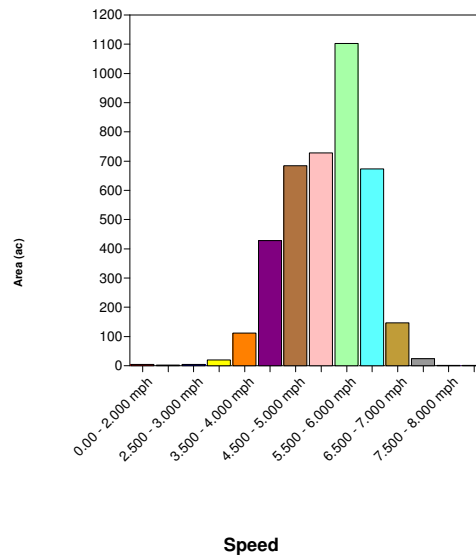
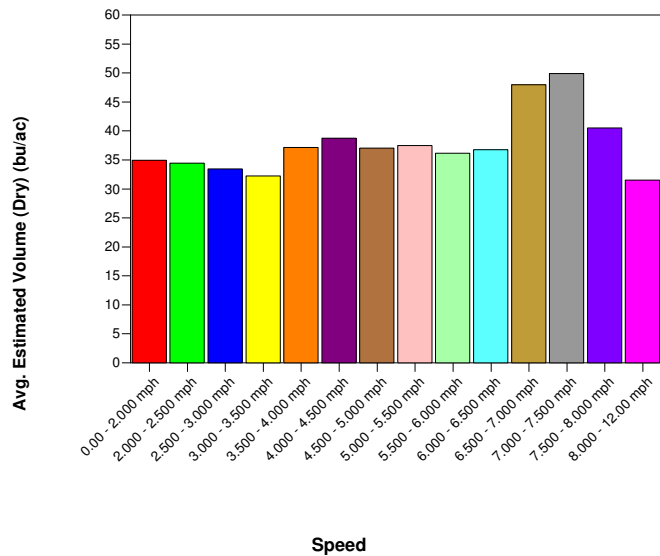


# Soybean Yield by Planting Speed

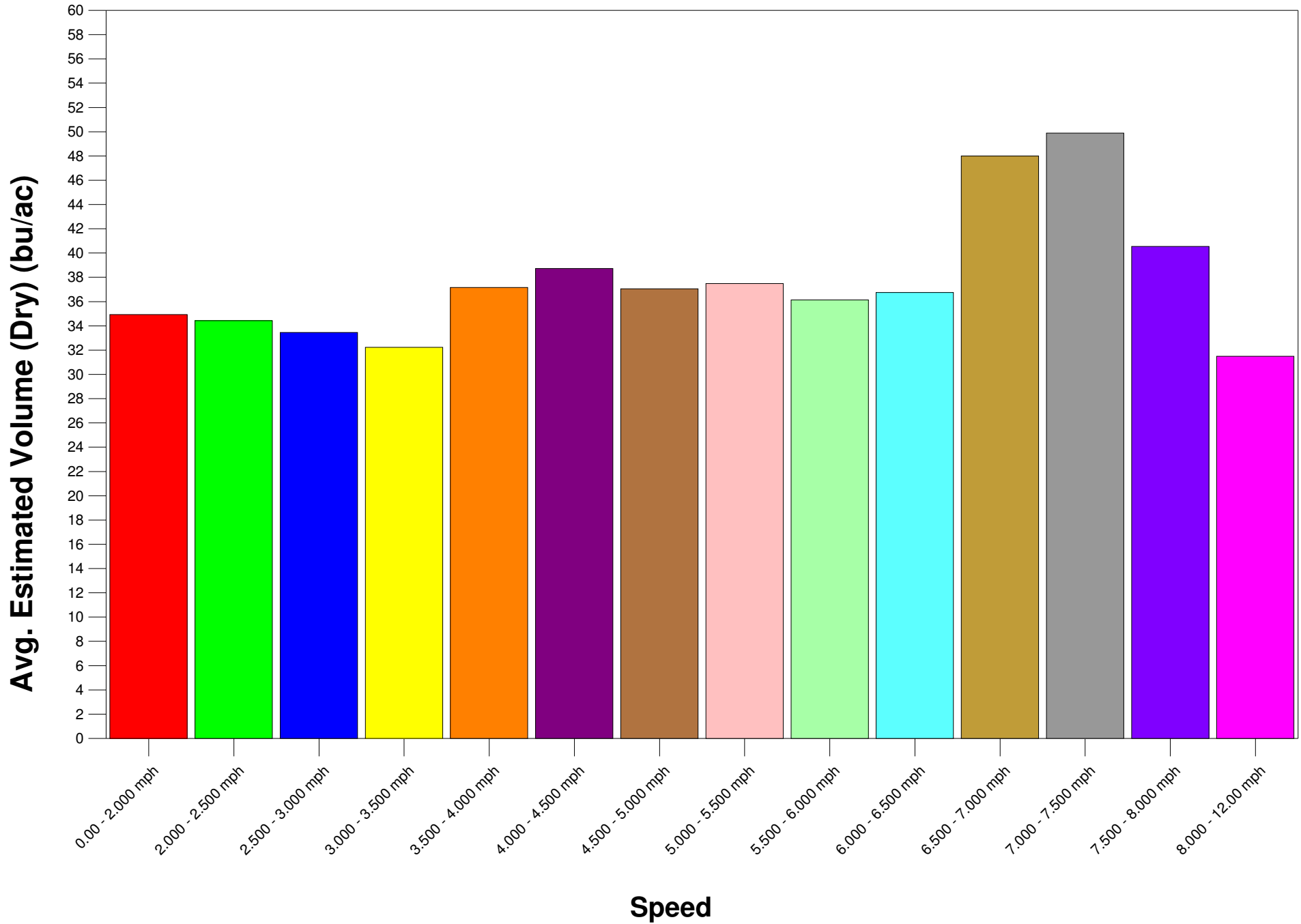


Analysis Description
Allows the comparison of an attribute(s) or property(s) against other attributes/properties
Year: 2012   Operation: Grain Harvest   Product - Crop Type: Soybeans   Product: (All)   Pest: (All)   Operational Instance: (All)
Analysis Results- Estimated Volume (Dry) Classified By- Planting : Speed

Speed	Avg. Estimated Volume (Dry) bu/ac	Total Estimated Volume (Dry) bu	Min. Estimated Volume (Dry) bu/ac	Max. Estimated Volume (Dry) bu/ac	Area ac
0.00 - 2.000 mph	34.94	151.21	5.126	332.81	4.328
2.000 - 2.500 mph	34.43	84.30	5.055	267.50	2.448
2.500 - 3.000 mph	33.46	154.96	5.077	363.52	4.632
3.000 - 3.500 mph	32.23	619.12	5.010	312.24	19.21
3.500 - 4.000 mph	37.16	4,160.8	5.007	373.15	111.98
4.000 - 4.500 mph	38.73	16,592	5.003	346.22	428.41
4.500 - 5.000 mph	37.06	25,346	5.001	385.02	683.92
5.000 - 5.500 mph	37.48	27,298	5.000	393.11	728.29
5.500 - 6.000 mph	36.13	39,841	5.002	374.32	1,102.7
6.000 - 6.500 mph	36.74	24,745	5.000	334.70	673.49
6.500 - 7.000 mph	47.99	7,034.4	5.023	208.04	146.59
7.000 - 7.500 mph	49.88	1,184.2	5.317	186.40	23.74
7.500 - 8.000 mph	40.54	54.53	5.502	78.77	1.345
8.000 - 12.000 mph	31.50	32.44	5.777	90.21	1.030
<b>(All)</b>	<b>37.46</b>	<b>147,297</b>	<b>5.000</b>	<b>393.11</b>	<b>3,932.1</b>



# Soybean Yield by Planting Speed



# Soybean Yield by Planting Speed

