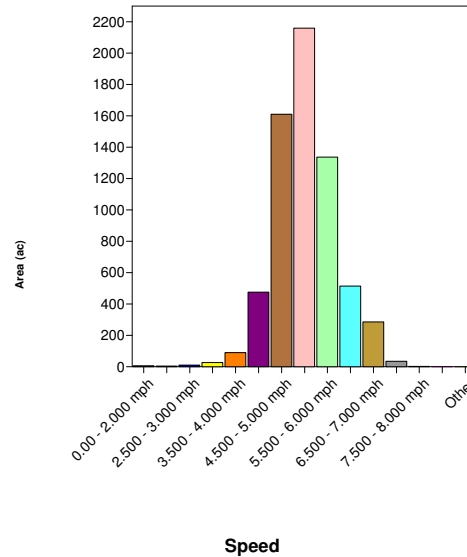
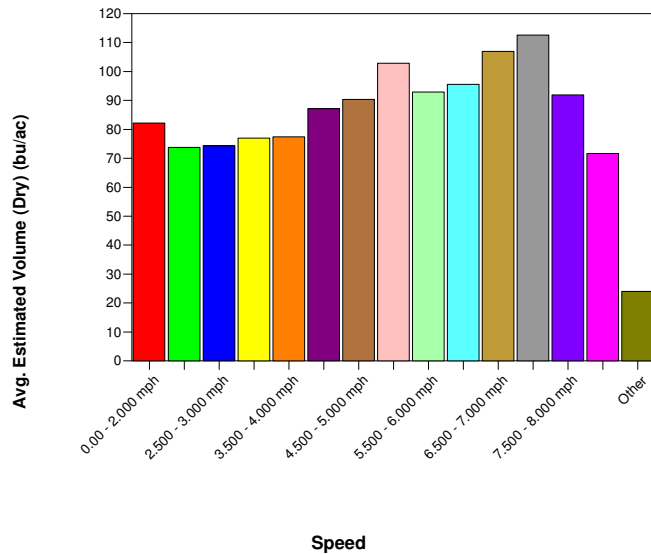


Corn Yield by Planting Speed

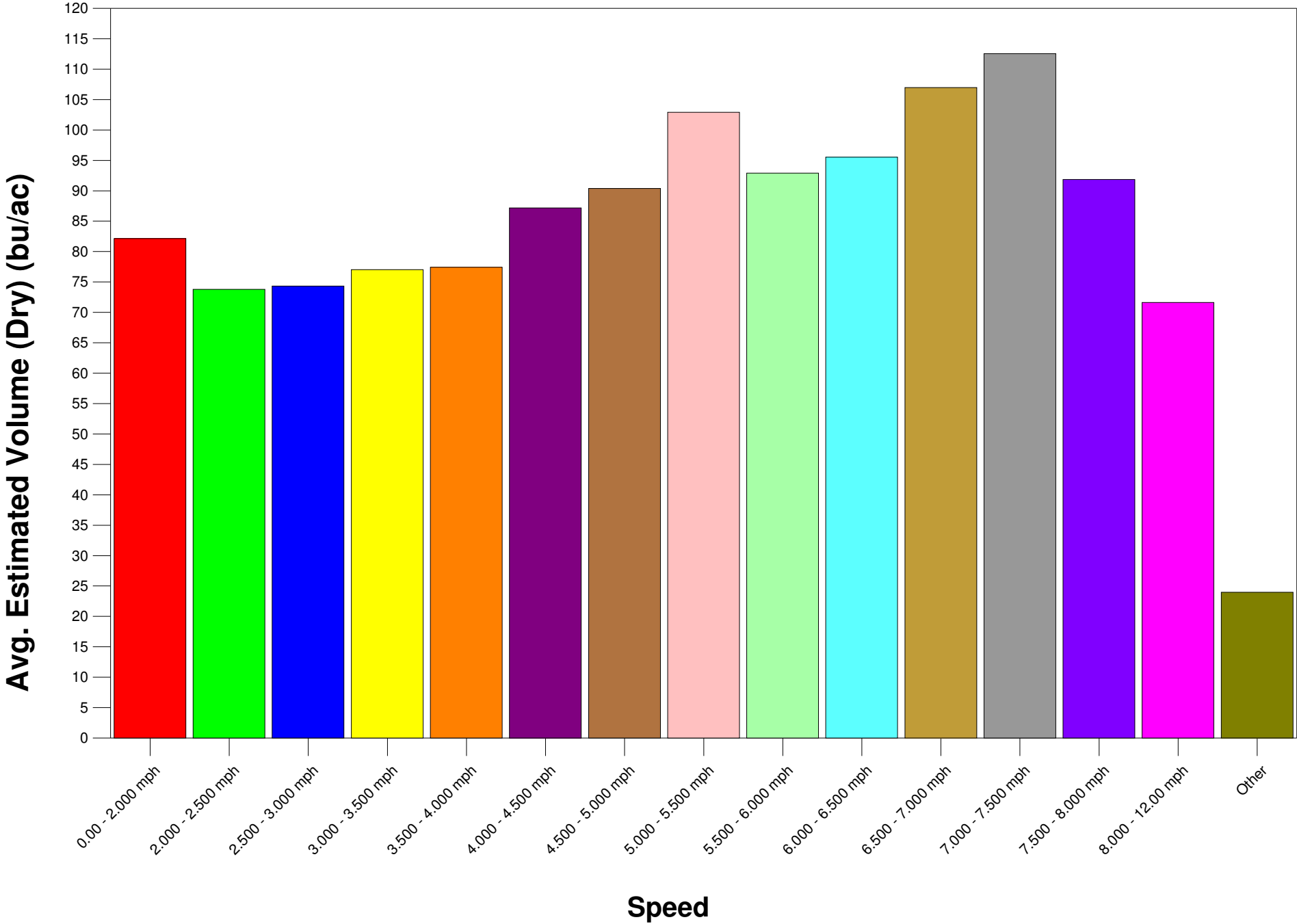


| Analysis Description |
|--|
| Allows the comparison of an attribute(s) or property(s) against other attributes/properties |
| Year: 2012 Operation: Grain Harvest Product - Crop Type: Corn Product: (All) Pest: (All) Operational Instance: (All) |
| Analysis Results- Estimated Volume (Dry) Classified By- Planting : Speed |

| Speed | Avg. Estimated Volume (Dry) bu/ac | Total Estimated Volume (Dry) bu | Min. Estimated Volume (Dry) bu/ac | Max. Estimated Volume (Dry) bu/ac | Area ac |
|-------------------|-----------------------------------|---------------------------------|-----------------------------------|-----------------------------------|----------------|
| 0.00 - 2.000 mph | 82.14 | 503.33 | 5.015 | 394.04 | 6.128 |
| 2.000 - 2.500 mph | 73.78 | 309.61 | 5.007 | 389.68 | 4.196 |
| 2.500 - 3.000 mph | 74.32 | 767.24 | 5.015 | 396.17 | 10.32 |
| 3.000 - 3.500 mph | 77.03 | 2,113.4 | 5.011 | 370.32 | 27.44 |
| 3.500 - 4.000 mph | 77.41 | 6,976.7 | 5.009 | 399.19 | 90.12 |
| 4.000 - 4.500 mph | 87.16 | 41,383 | 5.000 | 396.32 | 474.77 |
| 4.500 - 5.000 mph | 90.38 | 145,566 | 5.000 | 399.70 | 1,610.6 |
| 5.000 - 5.500 mph | 102.89 | 222,168 | 5.001 | 399.61 | 2,159.4 |
| 5.500 - 6.000 mph | 92.89 | 124,102 | 5.000 | 398.56 | 1,336.0 |
| 6.000 - 6.500 mph | 95.52 | 49,066 | 5.004 | 398.08 | 513.69 |
| 6.500 - 7.000 mph | 106.98 | 30,494 | 5.027 | 395.88 | 285.04 |
| 7.000 - 7.500 mph | 112.55 | 3,917.2 | 5.311 | 349.38 | 34.80 |
| 7.500 - 8.000 mph | 91.87 | 202.08 | 11.04 | 256.56 | 2.200 |
| 8.000 - 12.00 mph | 71.64 | 6.880 | 40.41 | 116.20 | 0.096 |
| Other | 23.97 | 0.134 | 23.97 | 23.97 | 0.0056 |
| (All) | 95.74 | 627,575 | 5.000 | 399.70 | 6,554.8 |



Corn Yield by Planting Speed



Corn Yield by Planting Speed

